

- Microphone, with ring luminant, and loudspeaker
- 3-way (YAN) voting with LED indicators
- Request to speak switch. Status is shown via a bi-colour LED
- Voice-Held (Self-Cancelling) option
- Compact unit design using surface mount technology (SMT)
- Luminant flashes to advise speaker to "wind up"
- Chairman units have additional priority/override facility
- Unit IDs stored in non-volatile memory
- Gain adjusted on an individual basis using the voting buttons to increase/decrease gain. Gain levels are stored in non-volatile memory. Gain can also be "tweaked" on the fly during meetings remotely from the computer
- Flush mounted, remote fixing and seat arm versions of the delegate and chairman units are also available



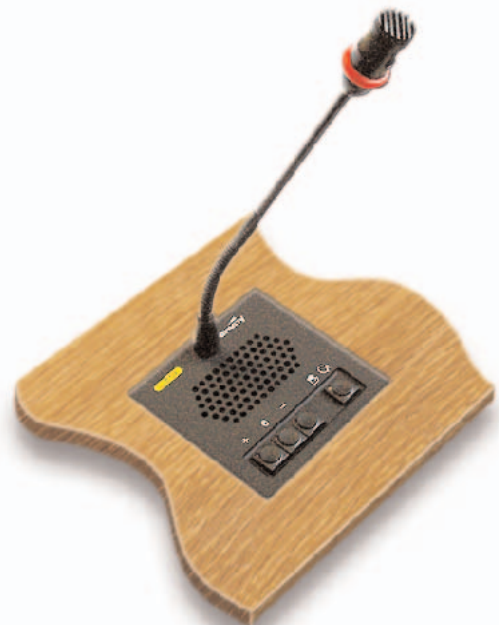
portable unit

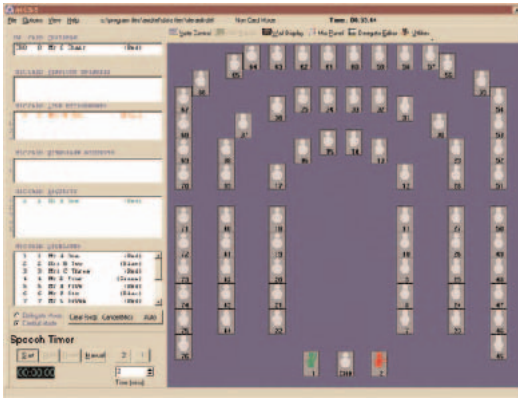


seat arm unit

The Auditel Envoy Digital Discussion System incorporates many of the features associated with full-scale professional conference system equipment, and has been designed without compromising the traditional Auditel strengths of high quality performance and reliability. Despite this, the Envoy is price competitive with inferior "budget" equipment, while offering superior performance, and wins the value for money contest hands down.

The Auditel Envoy conference system offers broadcast quality audio output with digital microphone control, using simple to use single cable loopthrough connections. The basic system can run automatically without an operator, or can be controlled using an Auditel push button console, or using a PC/laptop.





With Auditel's Windows™ compatible software, more sophisticated features are available via the user friendly 'virtual conference console' (VCC). Microsoft™ software provides microphone management using mouse and/or touchscreen control.

Software features include synchronised data sharing with standard applications such as Word and Excel. The Auditel software interface also includes camera control for fully automated image projection.

Technical Data

PRE-AMPLIFIER

Frequency response: 70Hz-16kHz -3dB
 THD+Noise: <1% at 1kHz & 1mV input
 Built-in signal limiter

MICROPHONE

Type: Uni-Directional, Cardioid
 Sensitivity: -63dB ±3dB
 Rear Attenuation: -20dB @ 1kHz
 Construction: Semi Flexible Composite Stem
 High Visibility Ring Luminant

LOUDSPEAKER

Frequency Response: 150Hz-17kHz (-10dB)
 Power Handling: 3000mW
 SPL: 82dB/W/m @ 1kHz

FEATURES

2m captive cable
 Push button switch for REQUEST/COUGH or MIC ON/OFF (chairman unit has yellow button for MIC/PRIORITY)
 LED indicator for MIC ON (red) and REQUEST (green)
 Push button switches for vote Yes, Abstain, No
 LED Indicators for vote confirmation

PHYSICAL

Portable unit

Dimensions: (WxDxH) - 140x140x350mm (extended, excl. cable)
 Weight: 650g (inc. cable)
 Enclosure: Impact resistant ABS case

Seatarm unit

Dimensions: (WxDxH) - 180x50x350mm (extended, excl. cable)

Flush mounted unit

Dimensions: (WxDxH) - 110x110x350mm (extended, excl. cable)

Architects and Engineers specification

The delegate unit shall have a unidirectional electret microphone with a ring luminant, request switch incorporating bi-colour status LED, 3-way (YAN) voting buttons with confirmatory LED's and optional Secret voting mode. The unit addresses are stored in solid state EEPROM memory. The microphone gain can be set electronically and is stored in non-volatile memory. The gain can be adjusted before a meeting on an individual basis by using the voting buttons to increase/decrease the gain. It can also (when used in conjunction with a PC) be remotely "tweaked" on the fly during an actual meeting. It has selectable voice-held (self cancelling) mode. The high brightness microphone ring luminant can be made to flash under control of a speech timer to alert speaker to wind up. The chairman unit is identical but with added priority facility. The portable unit uses 7-pin bayonet locking DIN connectors with free cable topology. Meets IEC914 & DIN45589.

We reserve the right to vary the specification without notice in the interest of product improvement

