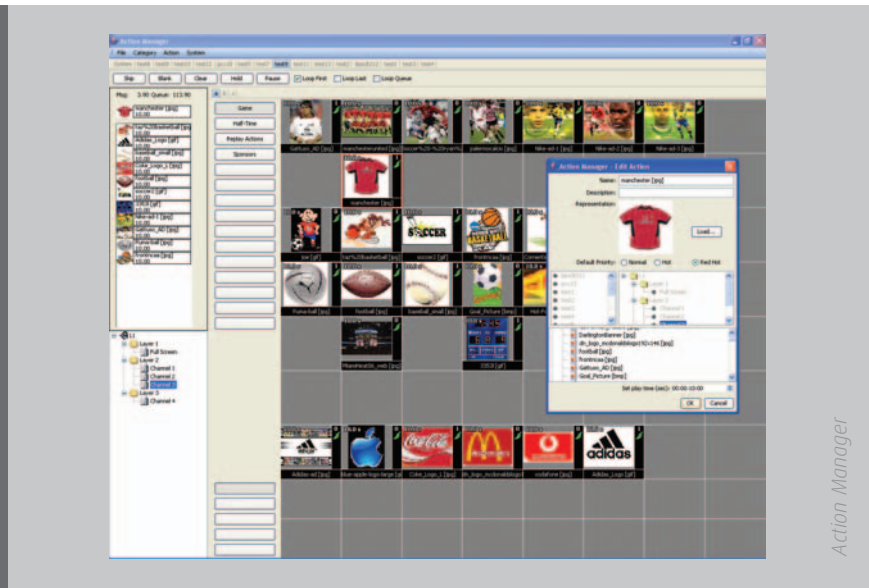


SportsBox 2.0



Barco's sports solution

Barco's sports display solutions give your fans the ultimate sports experience - before, during and after the game. As for your sponsors and vendors, they will love your Barco display's attention-grabbing power as you capture the crowd with promotions for future events, merchandise and concession sales!

Barco's custom display solutions have specifically been designed for sports facilities. From large format indoor and outdoor LED displays to fascia, scoreboards and timing devices, Barco can offer a total solution - encompassing hardware and software - tailor-made to suit your needs.

SportsBox 2.0 Software controller

SportsBox 2.0 is Barco's primary sports software to control your LED video displays. It is optimized for rapid response to live sports events by providing real-time content management and includes content scheduling and creation of both text and graphics. With SportsBox, scoring information, commercials, team logos, animations and other content can be organized into the system by the operator and displayed by a simple click of a button.

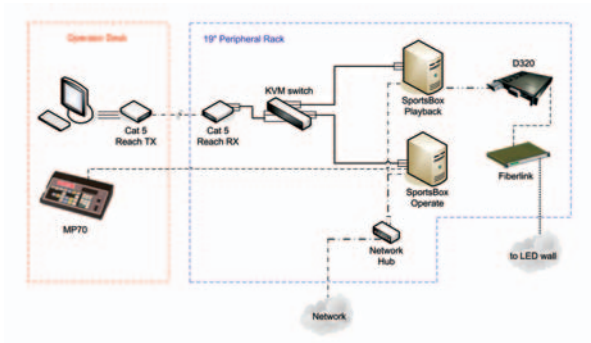
BARCO

Visibly yours

A powerful and user friendly Sports Software

A turnkey solution to control multiple video walls

SportsBox comes as a total package and is delivered with the needed PC platforms, cables, router and required equipment. The Hardware for the system is comprised of at least two dedicated PCs. The Operate PC is the workstation for the system where the majority of operator interface occurs. The Playback system assembles the input from the Operate machine along with any live data and captured video and feeds it to the D320. The system is expandable to include multiple Playbacks and integrate scoring devices.



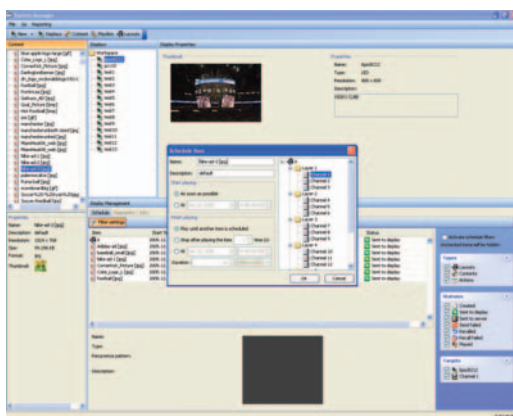
Multiple displays, as fascia, video wall, perimeter and cube, can be operated from one single operator station. Actions and animations can be ignited on different displays at the same time or individually.

Display control by a simple click

A user-friendly design and powerful features make the SportsBox 2.0 a popular sports software controller. Graphics, text, real-time data, video and sound can be processed and played-out across the sports arena.

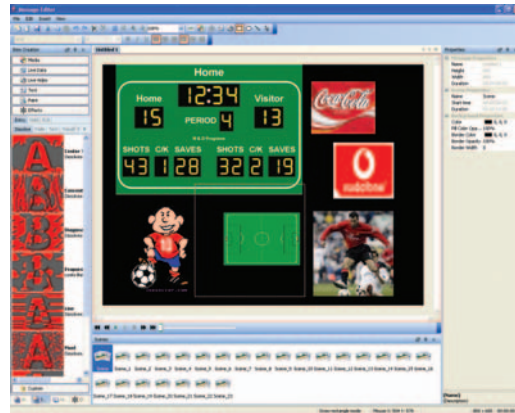
The Operator will have access to 3 different tools:

1. System Manager – The system manager is the main tool for display management & monitoring. From this module the operator can define & diagnose the displays, specify the display layout, organize scheduling tasks and reports.



System Manager

2. Message Editor – This WYSIWYG authoring tool allows you to create custom messages for display on the LED screen. By mixing video, graphics, text, real-time data feed and video effects the entertainment possibilities are endless.



Message Editor

3. Action Manager – This real-time interactive tool records the actions onto the unit and saves them as on-screen thumbnails. By simple clicks on these thumbnails, the operator organizes his playback and real-time sports show!

The playback system will render the graphics in real-time or according to a predefined schedule.

Specifically designed to drive LED fascia & perimeter displays

The SportsBox 2.0 is made to be displayed on long ribbons, without stretching, mirroring or tiling of the content. No inflexible & time-consuming pre-rendering stage is necessary, which gives the owner full control and a low cost of operation. This way, clubs and stadiums can offer the very best to their loyal sponsors and advertisers, as the animation will travel the full arena perimeter without duplication or interruption.

Major benefits

- Control of multiple LED display from one central PC. The same animation or commercial can be displayed on multiple LED boards across the sports arena.
- Professional WYSIWYG environment to mix graphics, live data and text in a single content item. Custom content can be saved and loaded (e.g. a soccer scoreboard).
- Change content on the fly with no pre-rendering required.
- Configurable and intuitive In-game interaction tool with user-defined thumbnail buttons.
- High graphical performance experienced with 60 fps for smooth animation travel.
- Specifically designed to drive LED ribbon and fascia.

Feature List

User interface

- Windows-style application with menus, icons, pull-down menus, and mouse and keyboard operations.

Output

- Animation display rate of at least 60 frames a second.
- Ability to insert graphics and text over animation.
- Ability to display live alphanumeric data feeds.

Interconnectivity

- Ability to control multiple signs and multiple sign sizes from one controller.

Quick Operations

- User-defined thumbnail buttons which can be assigned a single action or a series of cascading actions.
- Quickly display the current content you are creating/editing on a sign (<1/3 second time delay).
- Grouping of files for quick display.
- Grouping of "zones" for identical display on one sign (i.e. content sent once to a single zone can play simultaneously in multiple zones on a single sign).

Content Import and supported formats

- Compatible with industry standard content formats.
- Video: avi, mpeg-1,2,4, quicktime, windows media video, vob.
- Graphics: bmp, jpg, jpeg, png, gif, tga, tiff, dib, dds, ppm, hdr, pfm, wmf, pic, pict, pcx, psd.
- Audio: mp3, wma, wav, midi.

Audio Support

- Play background audio and video with audio encoded.

Content Creation

- Universal functions like Edit content using cut, copy, delete and paste frame options.
- Mix graphics, video, real-time data, paint objects, video capture, effects and text in a single content item.
- Create multiple graphic and/or text layers in a single content item.
- Allow entry/exit effects between content items.
- Open and edit multiple messages for different sign types/sizes. Easily move from one message to another when editing.
- Create and use custom colors that apply to both text and graphics.
- Allow adjustable layer opacity
- Quickly add a background to a message with either animated or static images.
- Supports scenes (similar concept as PowerPoint slides).
- Text editing functions.
- Graphic editing functions with line, ellipse, rectangle and magnifier tool.
- Ability to define and load custom items.

Play/Preview function

- Preview messages with the correct aspect viewing ratio.
- Preview a message immediately after making changes.

Scheduling

- Schedule message files or display controls with assigned play properties such as date, time, number of times to play, etc.
- Mix graphic, text, animation, audio files and display controls in a single schedule.
- Independently schedule on different zones.
- Repeat content on zones.

Layout

- Partition a sign into user-definable zones that can be controlled independently.
- Overlap zones with transparent backgrounds for a "picture-in-picture" effect.

Live Video

- Accepts one video input in all common video formats. (NTSC, PAL, SECAM, VGA as composite, component, and S-video inputs).
- Video and effects managed in same manner as all other content.
- Send video feed in real time to full matrix display or any defined zone.

Interactive functions

- User-defined action buttons launch any combination of content, play lists, and schedules for quick, easy display.
- Trigger action on multiple displays at the same time.
- Organize messages into categories for interactive display (e.g. score, half-time, concessions, advertisements, etc.).
- Prioritize actions to play in sequence, after the current message, or interrupt the current message.
- Determine a hold time for static images.
- Change the properties (priority, hold time, etc.) on multiple actions simultaneously.

Logging and reporting

- Logging of each message as it plays including time and status.
- Create a log report that can be sorted by sign.

Interfaces to real-time data sources

- Time of day (from PC clock).
- Count-down timer.
- RSS feed.
- Barco MP70 Sport Scoring device (RS232).
- Custom interfacing of live data stream or scoring devices on demand.

Countless sports applications



Estádio do Dragão, Porto, Portugal



Hala Sazka Arena, Prague, Czech



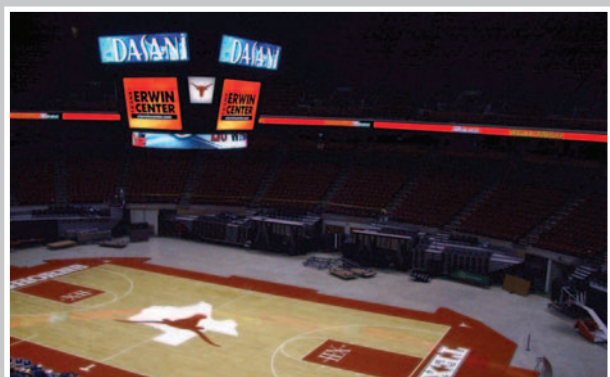
American Airlines Arena, Miami, FL, USA



Formula 1, Shanghai, China



Texas Tech University, Lubbock, TX, USA



Texas University, Austin, USA

Ref.no. R599996 - March 2006

The information and data given are typical for the equipment described. However any individual item is subject to change without any notice. The latest version of this product sheet can be found on www.barco.com.

Barco Media & Entertainment
Noordlaan 5, 8520 Kuurne - Belgium
Tel. +32 56 36 89 70 - Fax +32 56 36 83 86
email: sales.media@barco.com



Visibly yours